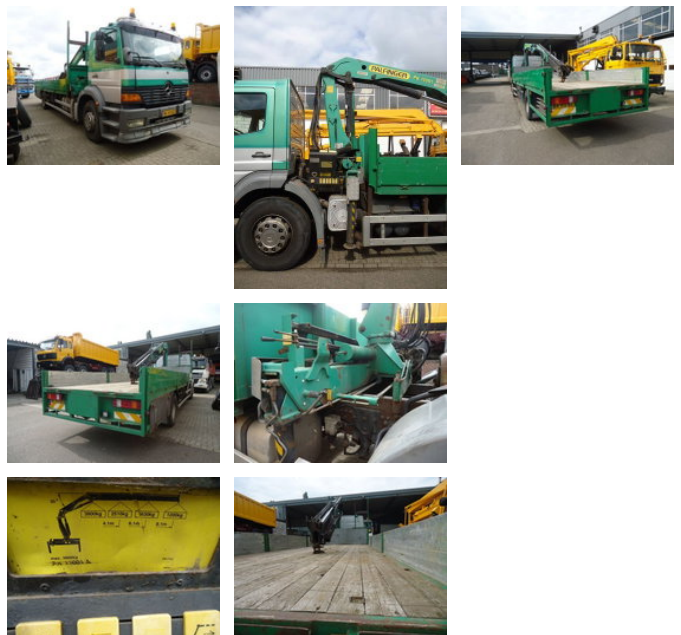


Mercedes-Benz ATEGO 1828L + Crane Palfinger PK11001 A

General characteristics

Brand	Mercedes-Benz
Subcategory	Drop side
License plate	BR-HS-82
Year of construction	1998
Date of first registration	06-10-1998
Colour	Otherwise
Condition	Used
Fuel	Diesel
Reference	ME980579



Properties

Cabin

Nee

Mercedes-Benz ATEGO 1828L + Crane Palfinger PK11001 A

Technical specifications

Transmission

Manual transmission

Assets

205kw

Description

CARGO TRUCK / LAADBAK MERCEDES Type 1828 L Traction 4x2 Cargo box, open with aluminium sideboards, timber floor.
705x245x130 CM CRANE Palfinger PK11001 A at 4.1 M - 2510 Kos at 6.1 M - 1630 Kos at 8.1 M - 1200 Kos Remote control

Accessories